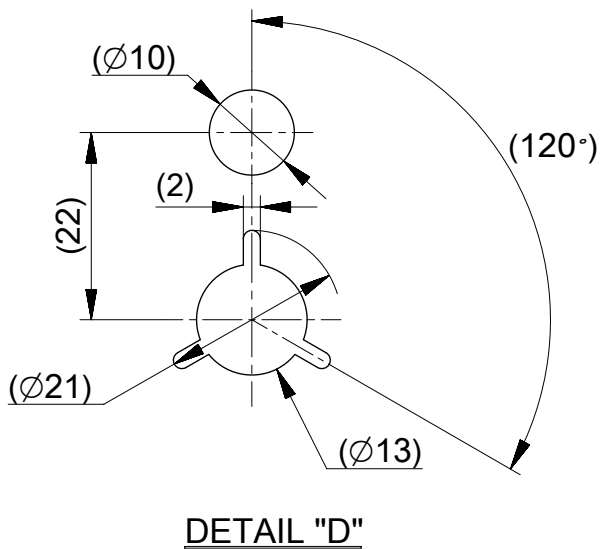
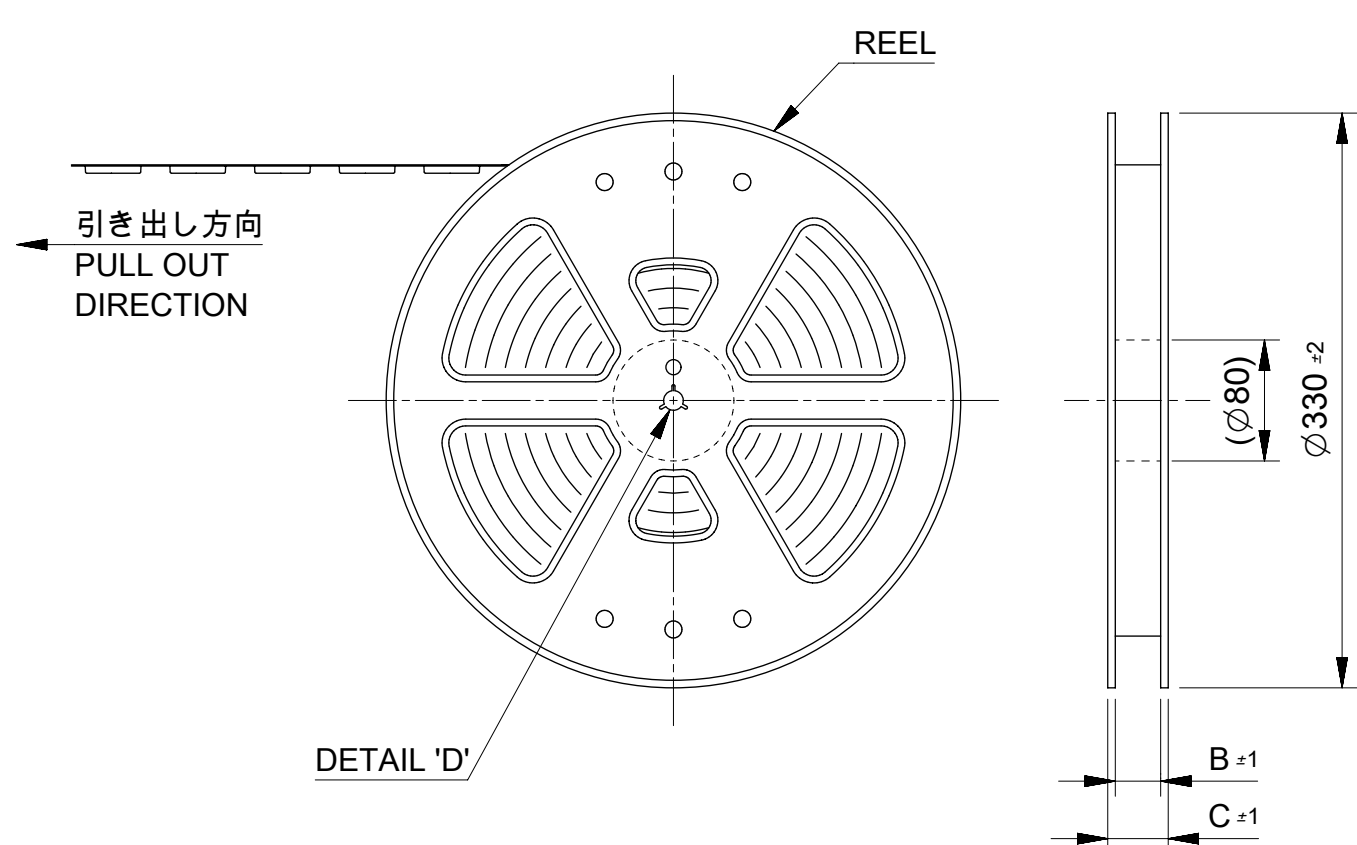
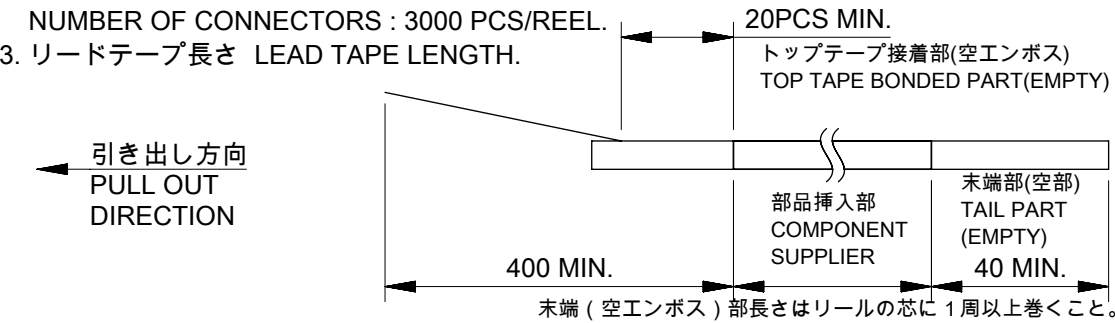


987654321

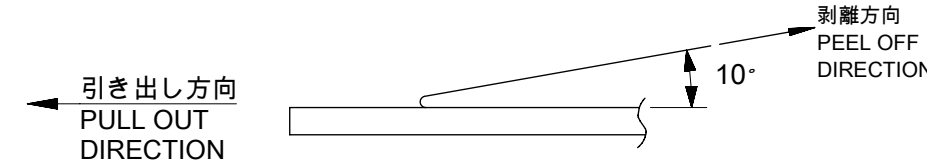


NOTES

- 製品詳細寸法については製品単体図面を参照下さい。
DETAIL DIMENSION SEE PRODUCT DRAWING.
- 梱包数量：3000個 / リール
NUMBER OF CONNECTORS：3000 PCS/REEL.
- リードテープ長さ LEAD TAPE LENGTH.



- トップテープの剥離強度：0.1N~1.3N(10gf~130gf)
(剥離方向は下図参照)
尚、本規格値は出荷時に適用。(但し、輸送時に剥離が発生しないこと。)
PEELING OFF FORCE OF TOP TAPE：0.1N~1.3N(10gf~130gf)
(PEELING DIRECTION AS SHOWN IN FOLLOWING FIG.)
THIS REQUIREMENT SHOULD BE APPLIED AT SHIPMENT.
PEEL OFF SHOULD NOT BE ALLOWED, DURING TRANSPORTATION.



- 材料 MATERIAL
キャリアテープ (CARRIER TAPE)：ポリスチレン (POLYSTYRENE)
トップテープ (TOP TAPE)：PET, OTHER
リール (REEL)：ポリスチレン (PS) [リサイクル材を含む]

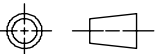
THIS DOCUMENT HAS BEEN RE-ISSUED BASED ON SD-503548-006, REV A

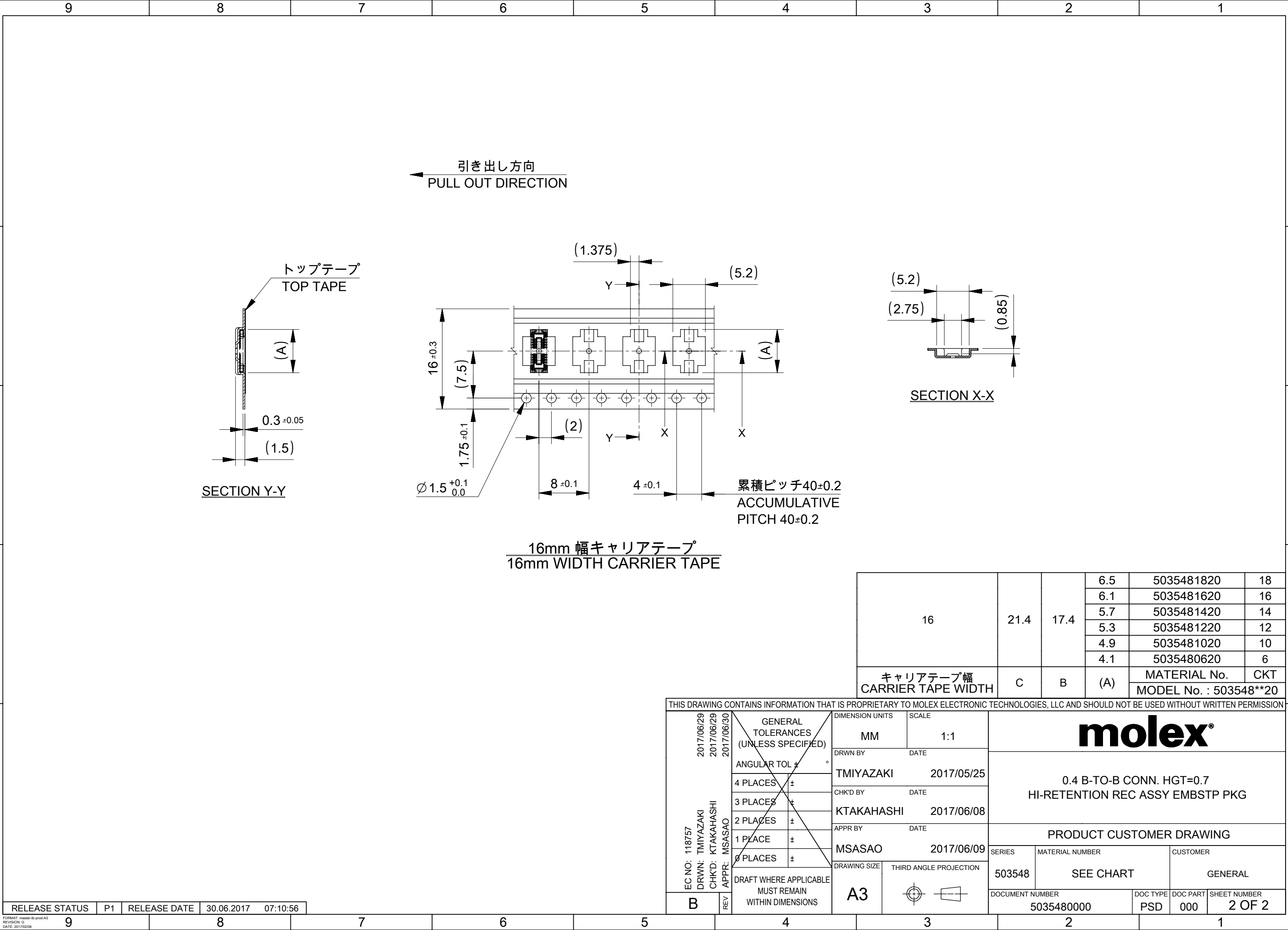
| | | | | |
|----------------|----|--------------|------------|----------|
| RELEASE STATUS | P1 | RELEASE DATE | 30.06.2017 | 07:10:56 |
|----------------|----|--------------|------------|----------|

FORMAT: master-ib-prod-A3
REVISION: 5
DATE: 2017/02/08

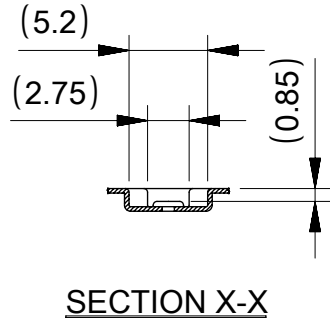
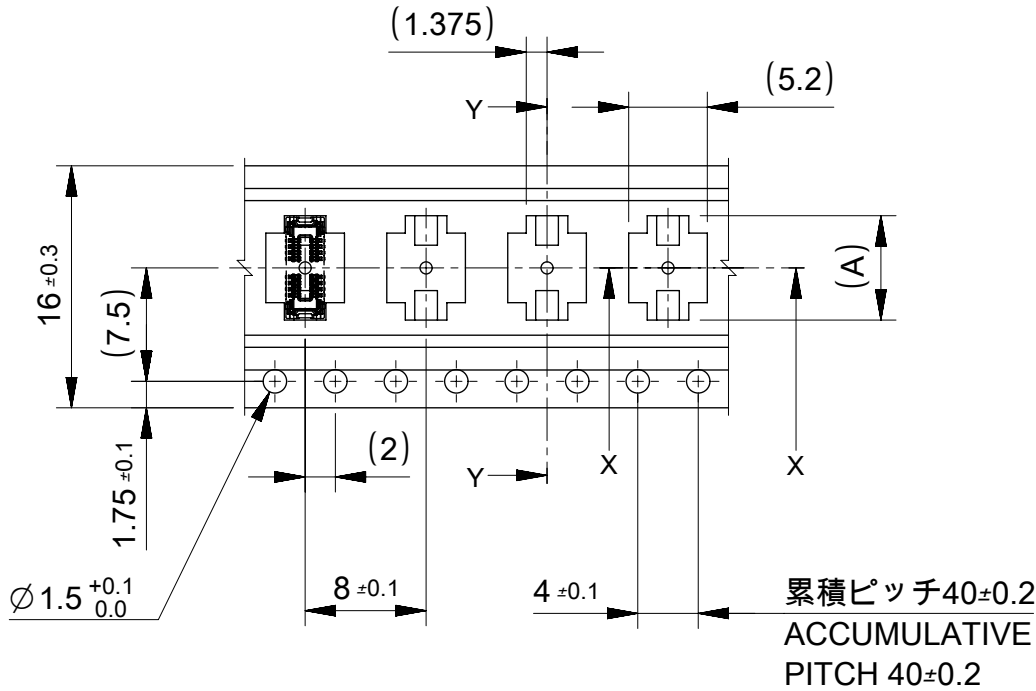
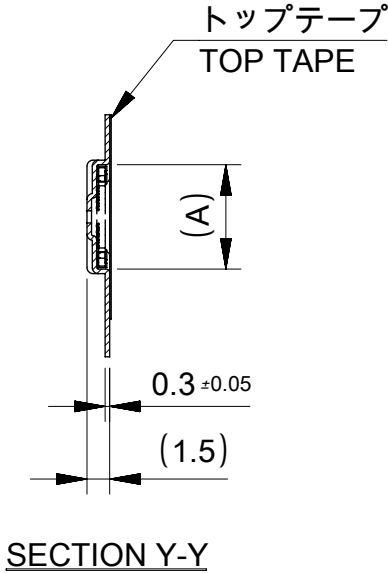
987654321

MODEL NO. : 503548**20

| | | | | | | | | | | | | | | | | |
|---|--|--|---|-------------------------------|------------------|------------|--|---|--|--|-----------------|--|--|-----------------|-----------------|------------------------|
| THIS DRAWING CONTAINS INFORMATION THAT IS PROPRIETARY TO MOLEX ELECTRONIC TECHNOLOGIES, LLC AND SHOULD NOT BE USED WITHOUT WRITTEN PERMISSION | | | | | | | | | | | | | | | | |
| EC NO: 118757 DRWN: TMIYAZAKI CHK'D: KTAKAHASHI APPR: MSASAO | 2017/06/29 2017/06/29 2017/06/30 | <div>GENERAL TOLERANCES (UNLESS SPECIFIED)</div> <div>ANGULAR TOL ± °</div> <div>4 PLACES ±</div> <div>3 PLACES ±</div> <div>2 PLACES ±</div> <div>1 PLACE ±</div> <div>0 PLACES ±</div> | | DIMENSION UNITS | | SCALE | | <div>molex®</div> <div>0.4 B-TO-B CONN. HGT=0.7</div> <div>HI-RETENTION REC ASSY EMBSTP PKG</div> | | | | | | | | |
| | | | | MM | | 1:1 | | | | | | | | | | |
| | | | | DRWN BY | | DATE | | | | | | | | | | |
| | | | | TMIYAZAKI | | 2017/05/25 | | | | | | | | | | |
| | | | | CHK'D BY | | DATE | | PRODUCT CUSTOMER DRAWING | | | | | | | | |
| | | | | KTAKAHASHI | | 2017/06/08 | | | | | | | | | | |
| | APPR BY | | DATE | | SERIES 503548 | | | | | | | | | | | |
| | MSASAO | | 2017/06/09 | | | | | | | | | | | | | |
| | DRAWING SIZE | | THIRD ANGLE PROJECTION | | | | | | | | MATERIAL NUMBER | | | | CUSTOMER | |
| | A3 | |  | | | | | | | | SEE SHEET 2 | | | | GENERAL | |
| B | REV | DRAFT WHERE APPLICABLE MUST REMAIN WITHIN DIMENSIONS | | DOCUMENT NUMBER 5035480000 | | | | | | | | | | DOC TYPE PSD | DOC PART 000 | SHEET NUMBER 1 OF 2 |



引き出し方向
PULL OUT DIRECTION



16mm 幅キャリアテープ
16mm WIDTH CARRIER TAPE

| | | | | | |
|--------------------------------|------|------|-----|------------------------|-----|
| 16 | 21.4 | 17.4 | 6.5 | 5035481820 | 18 |
| | | | 6.1 | 5035481620 | 16 |
| | | | 5.7 | 5035481420 | 14 |
| | | | 5.3 | 5035481220 | 12 |
| | | | 4.9 | 5035481020 | 10 |
| | | | 4.1 | 5035480620 | 6 |
| キャリアテープ幅 CARRIER TAPE WIDTH | C | B | (A) | MATERIAL No. | CKT |
| | | | | MODEL No. : 503548**20 | |

THIS DRAWING CONTAINS INFORMATION THAT IS PROPRIETARY TO MOLEX ELECTRONIC TECHNOLOGIES, LLC AND SHOULD NOT BE USED WITHOUT WRITTEN PERMISSION

| | | | | | | | | | | | | | |
|---|------------|--|-----------------|-----------------|--------------------------|------------------------|--|----------|-----------------|--------------|----------|---------|--|
| EC NO: 118757 DRWN: TMIYAZAKI CHK'D: KTAKAHASHI REV APPR: MSASAO | 2017/06/29 | <div>GENERAL TOLERANCES (UNLESS SPECIFIED)</div> <div>ANGULAR TOL ± °</div> <div>4 PLACES ±</div> <div>3 PLACES ±</div> <div>2 PLACES ±</div> <div>1 PLACE ±</div> <div>0 PLACES ±</div> <div>DRAFT WHERE APPLICABLE MUST REMAIN WITHIN DIMENSIONS</div> | DIMENSION UNITS | | SCALE | | molex® | | | | | | |
| | 2017/06/29 | | MM | | 1:1 | | | | | | | | |
| | 2017/06/30 | | DRWN BY | | DATE | | 0.4 B-TO-B CONN. HGT=0.7 HI-RETENTION REC ASSY EMBSTP PKG | | | | | | |
| | TMIYAZAKI | | 2017/05/25 | | | | | | | | | | |
| | CHK'D BY | | DATE | | PRODUCT CUSTOMER DRAWING | | | | | | | | |
| | KTAKAHASHI | | 2017/06/08 | | | | | | | | | | |
| | APPR BY | | DATE | | SERIES | | | | MATERIAL NUMBER | | CUSTOMER | | |
| | MSASAO | | 2017/06/09 | | | | | | | | | | |
| | B | | REV | DRAWING SIZE | | THIRD ANGLE PROJECTION | | 503548 | | SEE CHART | | GENERAL | |
| | | | | A3 | | | | | | | | | |
| | | | | DOCUMENT NUMBER | | DOC TYPE | | DOC PART | | SHEET NUMBER | | | |
| | | | | 5035480000 | | PSD | | 000 | | 2 OF 2 | | | |

| | | | | |
|----------------|----|--------------|------------|----------|
| RELEASE STATUS | P1 | RELEASE DATE | 30.06.2017 | 07:10:56 |
|----------------|----|--------------|------------|----------|

9 8 7 6 5 4 3 2 1

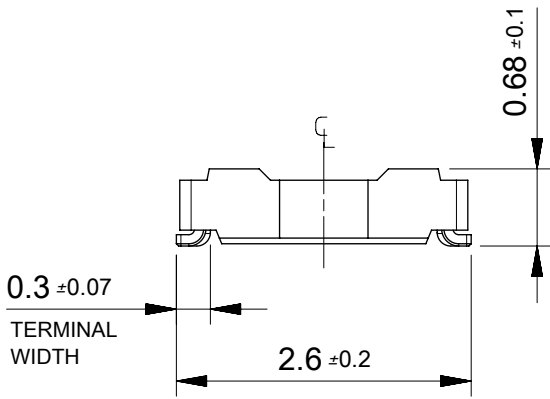
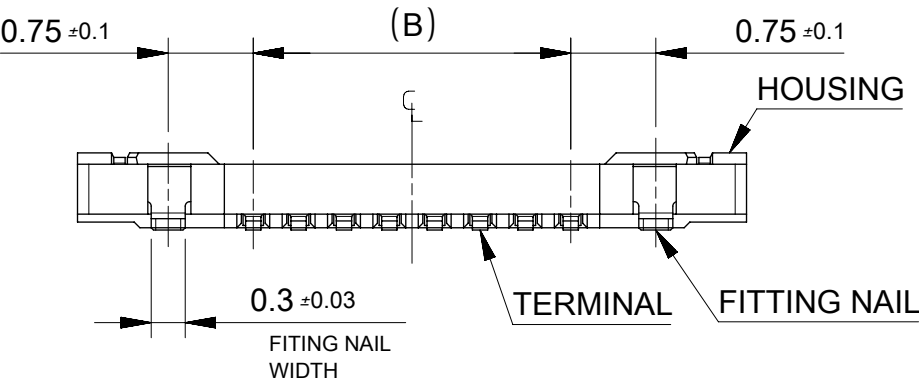
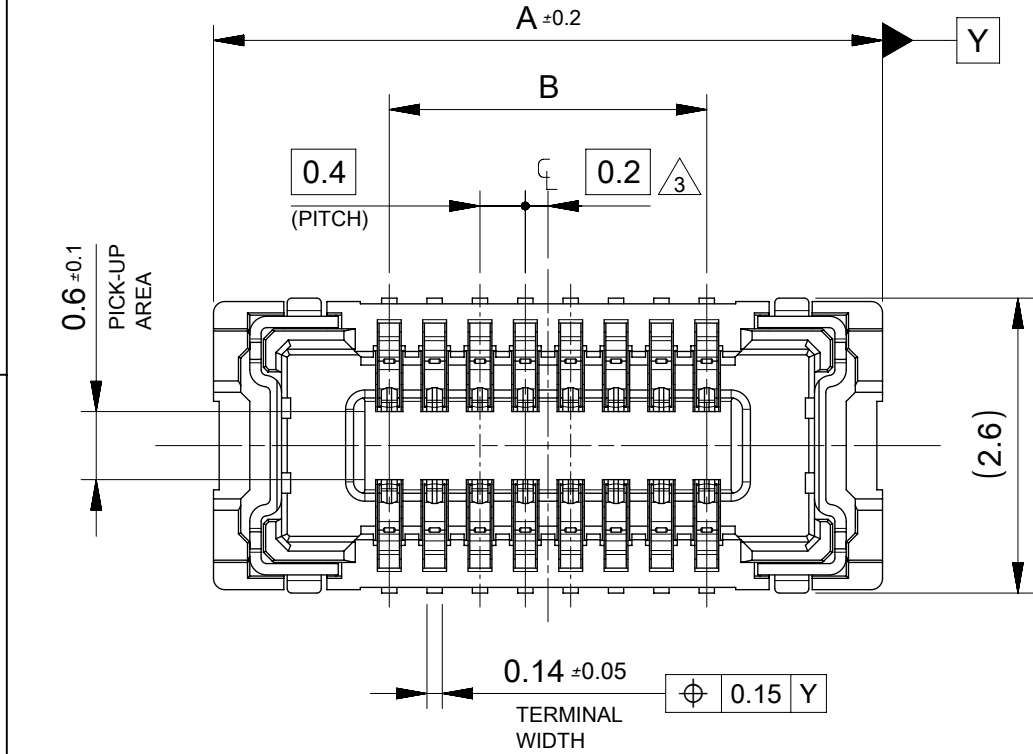
E

D

C

B

A



注記 NOTES

1. 使用材料 MATERIAL

ハウジング : 液晶ポリマー (LCP) UL94V-0 (黒)
HOUSING:LIQUID CRYSTAL POLYMER UL94V-0 (COLOR:BLACK)
ターミナル : 銅合金
TERMINAL : COPPER ALLOY
金具 : 銅合金
FITTING NAIL : COPPER ALLOY

2. メッキ仕様 PLATING

ターミナル TERMINAL

金メッキ GOLD

下地メッキ : ニッケルメッキ

UNDER PLATING : NICKEL

※コンタクト部とテール部の基板接触面には金メッキを施してあります。

それ以外の箇所は金メッキもしくはニッケルメッキが露出し、

外観上 色調が異なる場合がありますが、性能には影響ありません。

但し、コンタクト部とテール部の間にはニッケルメッキで金メッキを分断している箇所があります。

CONTACT AREA : GOLD PLATING

SOLDER TAIL AREA (PWB CONTACT SURFACE SIDE ONLY) : GOLD PLATING

OTHER AREAS : GOLD PLATING OR NICKEL PLATING

NICKEL PLATING DIVIDES BETWEEN THE CONTACT AREA (GOLD PLATING)

AND SOLDER TAIL AREA (GOLD PLATING).

金具 FITTING NAIL

金メッキ (テール部のみ) GOLD (ONLY TAIL PART)

下地メッキ : ニッケルメッキ

UNDER PLATING : NICKEL

△₃ (全極数 / 2) = 偶数の場合に適用。

APPLY FOR (CIRCUIT/2)=EVEN.

4. 嵌合相手 : 503552 シリーズ

MATE WITH : 503552 SERIES.

5. テール平坦度は、0.08 以下

テール及び金具の平坦度は、0.1 以下

TAIL COPLANARITY TO BE 0.08MAXIMUM.

TAIL AND FITTING NAIL COPLANARITY TO BE 0.1MAXIMUM.

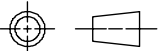
| | | | |
|---------|-----|-----------------------------------|-------------|
| 3.2±0.2 | 6.3 | 5035481820 | 18 |
| 2.8±0.2 | 5.9 | 5035481620 | 16 |
| 2.4±0.2 | 5.5 | 5035481420 | 14 |
| 2.0±0.2 | 5.1 | 5035481220 | 12 |
| 1.6±0.2 | 4.7 | 5035481020 | 10 |
| 0.8±0.1 | 3.9 | 5035480620 | 6 |
| B | A | EMBOSSED PACKAGE | |
| | | オーダー番号 ORDER No. | 極数 CIRCUITS |
| | | CONNECTOR SERIES No. : 503548**19 | |

THIS DOCUMENT HAS BEEN RE-ISSUED BASED ON SD-503548-005, REV A

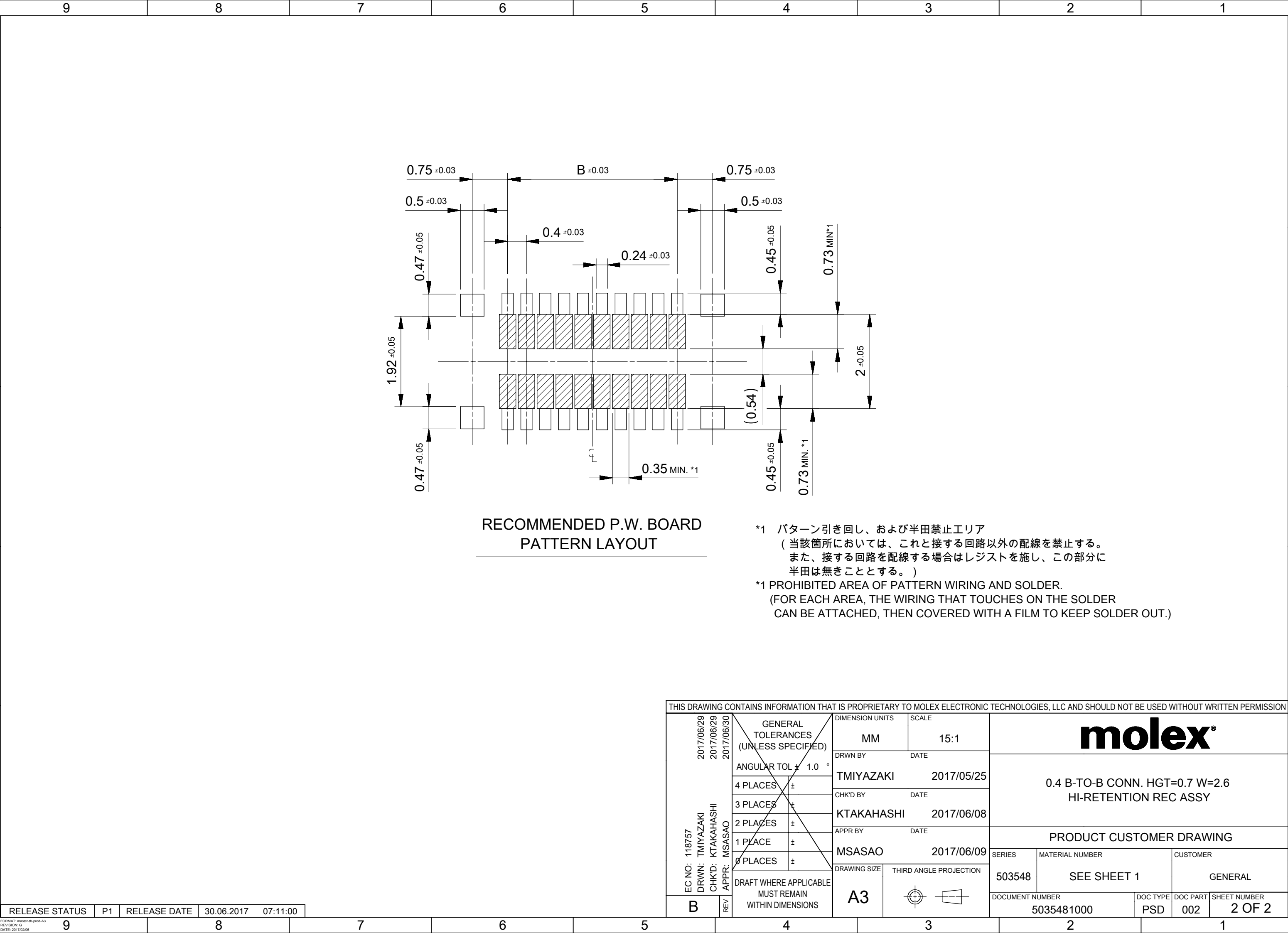
| | | | | |
|----------------|----|--------------|------------|----------|
| RELEASE STATUS | P1 | RELEASE DATE | 30.06.2017 | 07:11:00 |
|----------------|----|--------------|------------|----------|

FORMAT: master-ib-prod-A3
REVISION: G
DATE: 2017/02/08

THIS DRAWING CONTAINS INFORMATION THAT IS PROPRIETARY TO MOLEX ELECTRONIC TECHNOLOGIES, LLC AND SHOULD NOT BE USED WITHOUT WRITTEN PERMISSION

| | | | | | | | | | | | | | | | |
|---|------------|--|-----------------|--|--------------------------|-----------------|---|----------|--------|----------|-----------------|--------------|----------|--|--|
| EC NO: 118757 DRWN: TMIYAZAKI CHK'D: KTAKAHASHI APPR: MSASAO | 2017/06/29 | <div>GENERAL TOLERANCES (UNLESS SPECIFIED)</div> <div>ANGULAR TOL ± 1.0 °</div> <div>4 PLACES ±</div> <div>3 PLACES ±</div> <div>2 PLACES ±</div> <div>1 PLACE ±</div> <div>0 PLACES ±</div> <div>DRAFT WHERE APPLICABLE MUST REMAIN WITHIN DIMENSIONS</div> | DIMENSION UNITS | | SCALE | | molex® | | | | | | | | |
| | 2017/06/29 | | MM | | 15:1 | | | | | | | | | | |
| | 2017/06/30 | | DRWN BY | | DATE | | 0.4 B-TO-B CONN. HGT=0.7 W=2.6 HI-RETENTION REC ASSY | | | | | | | | |
| | TMIYAZAKI | | 2017/05/25 | | | | | | | | | | | | |
| | CHK'D BY | | DATE | | PRODUCT CUSTOMER DRAWING | | | | | | | | | | |
| | KTAKAHASHI | | 2017/06/08 | | | | | | | | | | | | |
| | APPR BY | | DATE | | SERIES | | | | | | MATERIAL NUMBER | | CUSTOMER | | |
| | MSASAO | | 2017/06/09 | | | | | | | | | | | | |
| | B | | REV | | DRAWING SIZE | | THIRD ANGLE PROJECTION | | 503548 | | SEE CHART | | GENERAL | | |
| | | | | | A3 | |  | | | | | | | | |
| | | | | | | DOCUMENT NUMBER | | DOC TYPE | | DOC PART | | SHEET NUMBER | | | |
| | | | | | | 5035481000 | | PSD | | 002 | | 1 OF 2 | | | |

9 8 7 6 5 4 3 2 1



RECOMMENDED P.W. BOARD
PATTERN LAYOUT

- *1 パターン引き回し、および半田禁止エリア
(当該箇所においては、これと接する回路以外の配線を禁止する。
また、接する回路を配線する場合はレジストを施し、この部分に
半田は無きこととする。)
- *1 PROHIBITED AREA OF PATTERN WIRING AND SOLDER.
(FOR EACH AREA, THE WIRING THAT TOUCHES ON THE SOLDER
CAN BE ATTACHED, THEN COVERED WITH A FILM TO KEEP SOLDER OUT.)

| THIS DRAWING CONTAINS INFORMATION THAT IS PROPRIETARY TO MOLEX ELECTRONIC TECHNOLOGIES, LLC AND SHOULD NOT BE USED WITHOUT WRITTEN PERMISSION | | | | | | | | | | | |
|---|--|--|------------------------|-----------------|--------|------------|-----------------|---|----------|--------------|----------|
| EC NO: 118757 DRWN: TMIYAZAKI CHK'D: KTAKAHASHI REV APPR: MSASAO | 2017/06/29 2017/06/29 2017/06/30 | <div>GENERAL TOLERANCES (UNLESS SPECIFIED)</div> <div>ANGULAR TOL ± 1.0 °</div> <div>4 PLACES ±</div> <div>3 PLACES ±</div> <div>2 PLACES ±</div> <div>1 PLACE ±</div> <div>0 PLACES ±</div> | | DIMENSION UNITS | | SCALE | | <div>molex®</div> <div>0.4 B-TO-B CONN. HGT=0.7 W=2.6 HI-RETENTION REC ASSY</div> | | | |
| | | | | MM | | 15:1 | | | | | |
| | | | | DRWN BY | | DATE | | | | | |
| | | | | TMIYAZAKI | | 2017/05/25 | | | | | |
| | | | | CHK'D BY | | DATE | | PRODUCT CUSTOMER DRAWING | | | |
| | | | | KTAKAHASHI | | 2017/06/08 | | | | | |
| | | | | APPR BY | | DATE | | | | | |
| | MSASAO | | 2017/06/09 | | SERIES | | MATERIAL NUMBER | | CUSTOMER | | |
| | DRAWING SIZE | | THIRD ANGLE PROJECTION | | 503548 | | SEE SHEET 1 | | GENERAL | | |
| | DRAFT WHERE APPLICABLE MUST REMAIN WITHIN DIMENSIONS | | A3 | | | | DOCUMENT NUMBER | | DOC TYPE | | DOC PART |
| | | | | | | 5035481000 | | PSD | | 002 | |
| | | | | | | | | | | SHEET NUMBER | |
| | | | | | | | | | | 2 OF 2 | |